

ABS Plastic Hand Held Enclosures 1553 Series

Soft Sided, Ergonomic Comfort, Battery Compartments

Key Features:

- Ergonomically designed for hand-held comfort.
- Choice of five sizes and six color combinations.
- Choice of two versions in the three larger sizes (ie...with or without battery door & compartment)
- Molded in general purpose ABS plastic with an overmold, soft plastic grip.
- Top cover is recessed for membrane display or keypad.
- P.C. board standoffs are molded into case (see drawings or photos for more details).
- Includes removable front panel (for easy modifications) and assembly hardware (except for smallest 1553A units).
- Battery door & compartment version includes 4 battery clips (for 2 - AA batteries) and a 9 volt (PP3) battery clip.
- Gray 1553 series enclosures include nickel plated screws. All other color use black screws. Refer to product datasheets for correct part numbers.
- For similar enclosures designed for water-tight applications, try series **1553W**

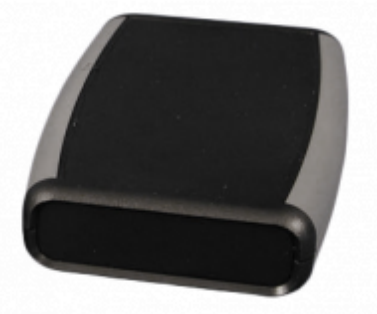


Photo Features:

Perfect for handheld use.

Battery version comes with clips for AA for 9V.



Additional Color Combinations Available



Accessories:



ProtoBoard Printed Circuit Boards:

- High quality FR4 glass epoxy board
- Specifically designed to fit enclosures shown in the table below
- Mounting screws included
- Lead free etched copper PCB with a flux coating for easy soldering
- 0.042" holes drilled on 0.1" centers
- For more information link to the BPS (BusBoard Prototype Systems) website www.busboard.com

1553BPCB - works with 1553 sizes "B" and "C"

1553DBPCB - works with 1553 size "D"

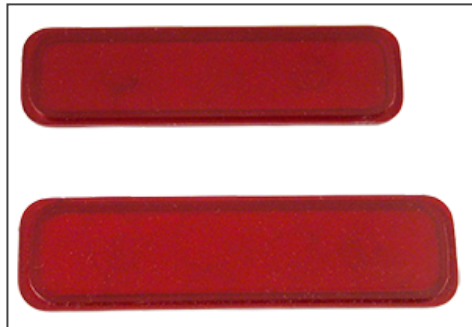


Belt/ Pocket Clip Option:

- Molded from touch nylon
- Includes 2 nylon screws (insulated to avoid interference)
- Mounting Template Included (user drilling required)

1599CLIP (black)

1599CLIPGY (gray)



IR End Panels

- Replaces existing front plastic panel.
- Dark red plastic filter (transparent to IR).

For all 1553 "B" sized enclosures - Part Number **1553BIR-BULK**

For all 1553 "D" sized enclosures - Part Number **1553DIR-BULK**

Without Battery Doors & Compartments

Part Number	Enclosure	Overmold	Overall Dimensions			Max. P.C. Board	
	Color	Color	Length	Width	Depth	Length	Width
1553AABK	Black	Gray	75	50	17	69	42
1553AAGY	Grey	Gray	75	50	17	69	42
1553ABK	Black	Gray	100	61	17	95	48
1553AGY	Grey	Gray	100	61	17	95	48
1553BBK	Black	Gray	117	79	24	109	61
1553BGY	Grey	Gray	117	79	24	109	61
1553BBKBK	Black	Black	117	79	24	109	61
1553BTBUBK	Trans Blue	Black	117	79	24	109	61
1553BRDBK	Red	Black	117	79	24	109	61
1553BYLBK	Yellow	Black	117	79	24	109	61
1553CBK	Black	Gray	117	79	33	109	61
1553CGY	Grey	Gray	117	79	33	109	61
1553DBK	Black	Gray	147	89	25	139	67
1553DGY	Grey	Gray	147	89	25	139	67
1553DBKBK	Black	Black	147	89	25	139	67
1553DTBUBK	Trans Blue	Black	147	89	25	139	67
1553DRDBK	Red	Black	147	89	25	139	67

Part Number	Enclosure	Overmold	Overall Dimensions			Max. P.C. Board	
	Color	Color	Length	Width	Depth	Length	Width
1553DYL BK	Yellow	Black	147	89	25	139	67

With Battery Doors & Compartments

Part Number	Enclosure	Overmold	Overall Dimensions			Max. P.C. Board	
	Color	Color	Length	Width	Depth	Length	Width
1553BBKBAT	Black	Gray	117	79	24	78	61
1553BGYBAT	Grey	Gray	117	79	24	78	61
1553BBKBKBAT	Black	Black	117	79	24	109	61
1553BTBUBKBAT	Trans Blue	Black	117	79	24	109	61
1553BRDBKBAT	Red	Black	117	79	24	109	61
1553BYLBKBAT	Yellow	Black	117	79	24	109	61
1553CBKBAT	Black	Gray	117	79	33	109	61
1553CGYBAT	Grey	Gray	117	79	33	109	61
1553DBKBAT	Black	Gray	147	89	25	107	67
1553DGYBAT	Grey	Gray	147	89	25	107	67
1553DBKBKBAT	Black	Black	147	89	25	107	67
1553DTBUBKBAT	Trans Blue	Black	147	89	25	107	67
1553DRDBKBAT	Red	Black	147	89	25	107	67
1553DYLKBAT	Yellow	Black	147	89	25	107	67

Extra End Panels (10-packs)

Enclosure Size	Black	Gray	Red	Translucent Blue	Yellow
1553B	1553BPLBK-10	1553BPLGY-10	1553BPLRD-10	1553BPLTBU-10	1553BPLYL-10
1553C	1553CPLBK-10	1553CPLGY-10			
1553D	1553DPLBK-10	1553DPLGY-10	1553DPLRD-10	1553DPLTBU-10	1553DPLYL-10

Extra Battery Doors (5-packs)

Enclosure Size	Black	Gray	Red	Translucent Blue	Yellow
All 1553's with battery doors	53BATDOORBK-5	53BATDOORGY-5	53BATDOORRD-5	53BATDOORTBU-5	53BATDOORYL-5

Data subject to change without notice